

Office to let

Matei Basarab (13-15) Office Building

Bucharest, Sector 3, 13-15 Matei Basarab Street



Building information

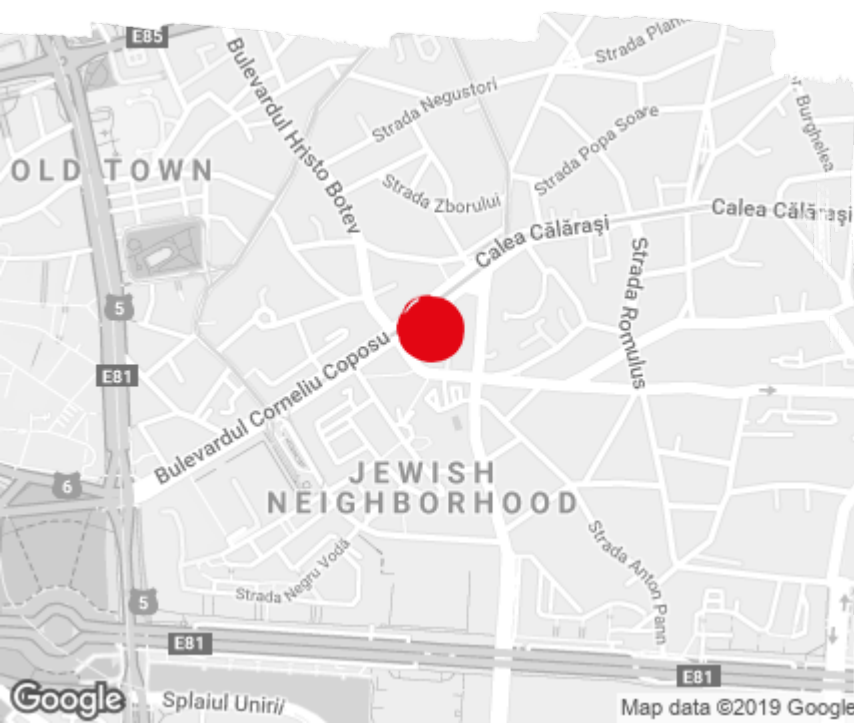
Building status	Existing
Year of construction	2012
Parking ratio	1 / 135 sq m
Total building area	3 040 sq m

Commercial terms

Office space*	after login *
Parking	after login *
Minimum lease term	after login *
Availability	after login *

* Asking terms for m²/month

Location



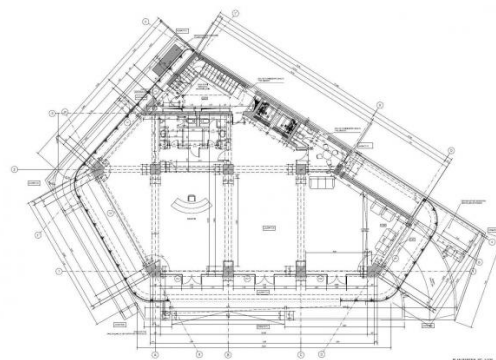
Available space

Building completely leased

Standard fit-Out

- ☼ Air conditioning
- ☰ Suspended ceiling
- ☎ Telephone cabling
- ⚡ Power cabling
- @ Fibre optics
- 📡 Switchboard
- 🪟 Openable windows

Typical floor plan



Public transport

Bus: 117, 104, 123, 124, 385

Tram: 5, 14, 16, 21, 40, 50, 56

Contact



+40 21 302 3400

More information